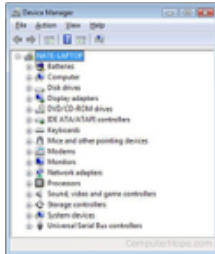


WAVE Download Support

Manual update of Cel-Fi Drivers for Windows XP & 7



Step 1: Click the Windows Start button, type “device manager” and press enter. If you do not see the Cel-Fi Device listed in Device Manager, we can try manually install it.

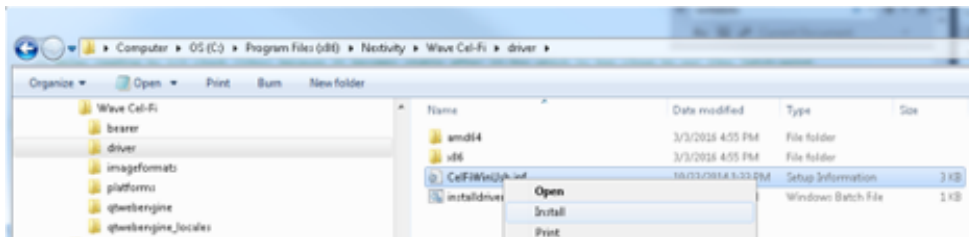


Step 2: Remove the USB cable from the PC to the Cel-Fi device.

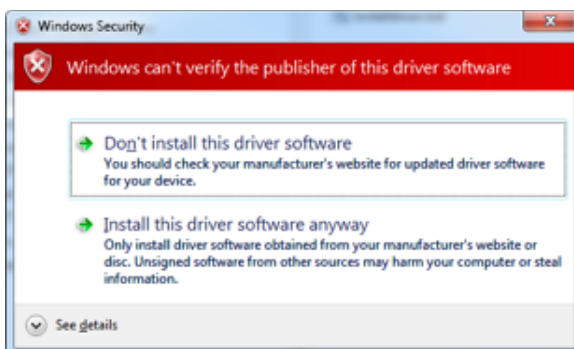
Step 3: Find the folder where the Cel-Fi custom driver will be installed on your Windows PC. If you used the default installation path, it will be here:

C:\Program Files (x86)\Nextivity\Wave Cel-Fi\driver

Step 4: In this directory is the Setup Information file called CelFiWinUsb.inf. Right-click on the file and click the Install option.



Step 5: Windows 7 may warn that it cannot verify the publisher. Click “Install this driver software anyway”



Step 6: When the installation is complete reconnect the Cel-Fi device.